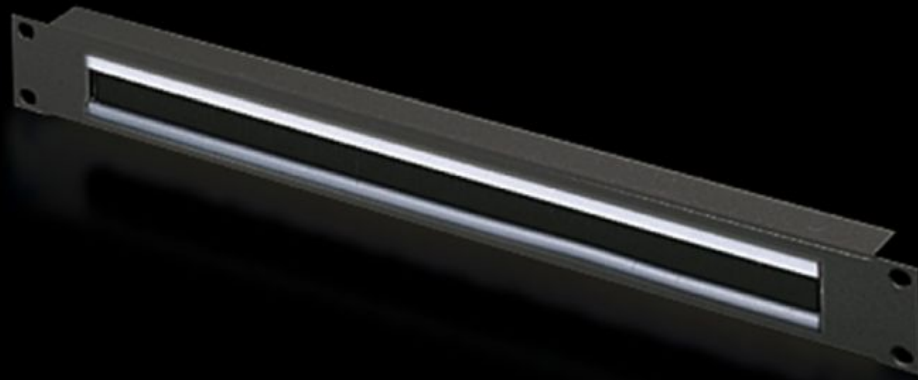


**Rittal – The System.**

Faster – better – everywhere.



**DK 5502.255**

**Cable management panel with  
brush strip**

State: 30/09/2022 (Source: [rittal.com/uk-en](http://rittal.com/uk-en))

ENCLOSURES

POWER DISTRIBUTION

CLIMATE CONTROL

IT INFRASTRUCTURE

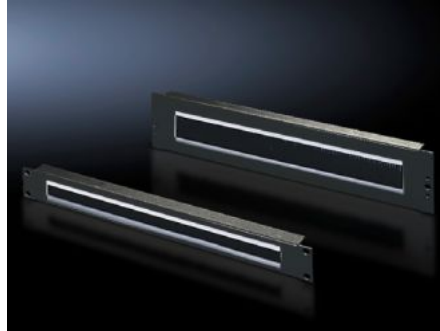
SOFTWARE & SERVICES

FRIEDHELM LOH GROUP



# DK 5502.255 - Cable management panel with brush strip 482.6 mm (19")

With cut-out 390 x 40 mm (2 U) or 390 x 20 mm (1 U) with brush insert, accommodation facility for cable clamp straps.



## Features

Model No.	DK 5502.255
Product description	For convenient, simple cable routing between two areas separated by a 482.6 mm (19") mounting level, for example, between the front and rear areas of the 482.6 mm (19") mounting level.
Applications	For locking and simultaneous cable routing in installation zones to the 1 U, 482.6 mm (19") mounting standard
Material	Sheet steel Brush strip: Plastic, UL 94-HB
Surface finish	Spray-finished
Colour	RAL 9005
Mounting cut-out	Width:390 mm Height:20 mm
Dimensions	Width: 482.6 mm
Units	1 U
Packs of	1 pc(s).
Weight/pack	0.486 kg
Copper weight (kg per piece)	0

# Features

---

Customs tariff number	73269098
EAN	4028177679368
ETIM 7.0	EC000322
ECLASS 8.0	27400604

# Approvals

---

Approvals	GOST
-----------	------