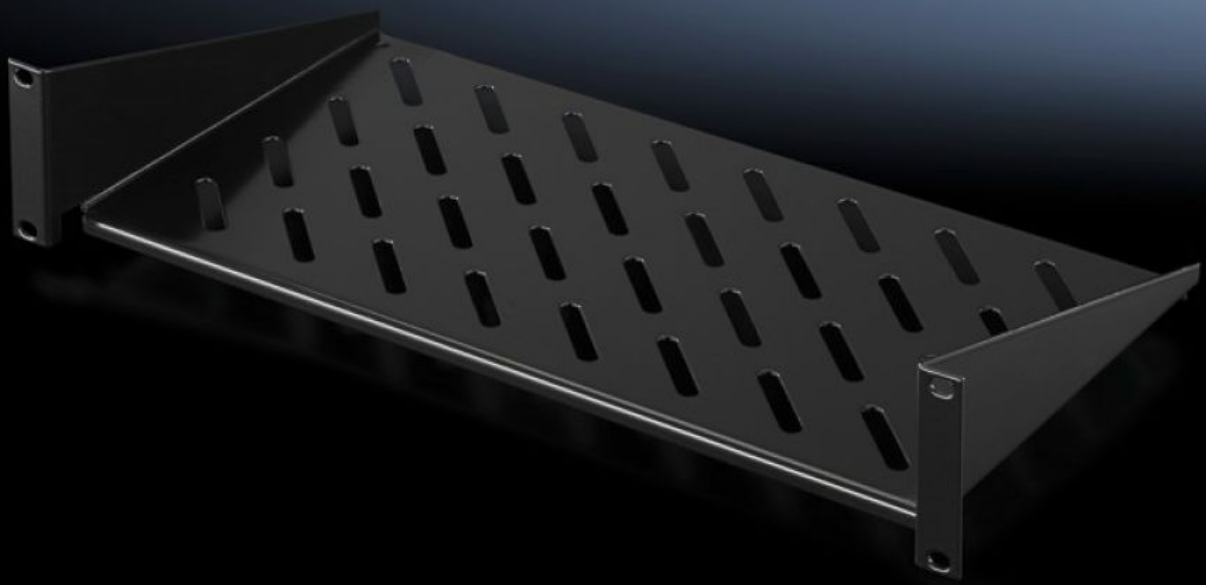


# Rittal – The System.

Faster – better – everywhere.



## DK 5501.625

# Component shelf 2 U, static installation

State: 30/09/2022 (Source: [rittal.com/uk-en](http://rittal.com/uk-en))

ENCLOSURES

POWER DISTRIBUTION

CLIMATE CONTROL

IT INFRASTRUCTURE

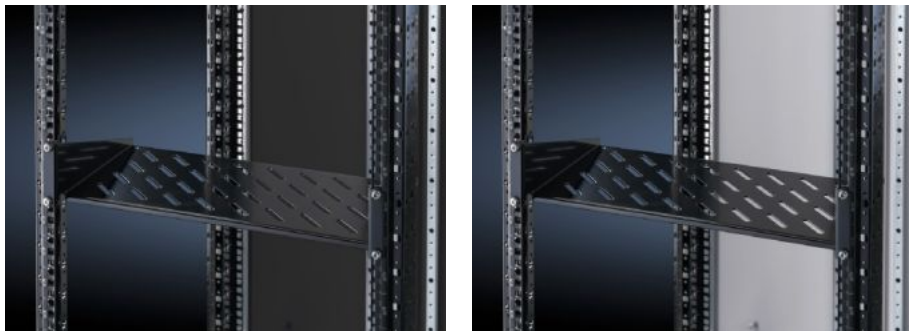
SOFTWARE & SERVICES

FRIEDHELM LOH GROUP



# DK 5501.625 - Component shelf 2 U, static installation

Component shelf 2 U, static installation for attachment to the 482.6 mm (19") system punchings.  
Load capacity: 25 kg.



## Features

Model No.	DK 5501.625
Design	482.6 mm (19")
Product description	For mounting between 482.6 mm (19") mounting angles.
Material	Sheet steel
Surface finish	Spray-finished
Colour	RAL 9005
Load capacity	25 kg surface load, static
Note	Not suitable for combination with telescopic slides.
Dimensions	Width: 482.6 mm Depth: 400 mm
Packs of	1 pc(s).
Weight/pack	3 kg
Copper weight (kg per piece)	0
Customs tariff number	73269098
EAN	4028177679061
ETIM 7.0	EC002620
ECLASS 8.0	27189261

# Approvals

---

Approvals

GOST