



# SEIKOH GIKEN

~Global Solutions in Optical Precision~

## FerruleMate™ 2.0 Optical Interconnect Maintenance Solutions

Seikoh Giken Company is pleased to announce the next generation of FerruleMate fiber cleaners - FerruleMate 2.0. Utilizing our patented rotating cleaning tip and unique Slide-Guide cleaning cloth, the new FerruleMate 2.0 offers the widest cleaning area on the market today. A key feature of the FerruleMate 2.0 is its unique Push-Click operation. The contoured tip fits easily into the feed-through adapter and the self-actuated cleaning tape feed provides an audible "Click" confirming that the cleaning is successful. Connector cleaning performance is guaranteed as the FerruleMate 2.0 cleans beyond the critical fiber core and deep into the contact area while still seated in a bulkhead adapter. The FerruleMate 2.0 is a remarkable evolution for its combination of "Durability", "Reliability", "Simplicity" and "Low Cleaning Cost".

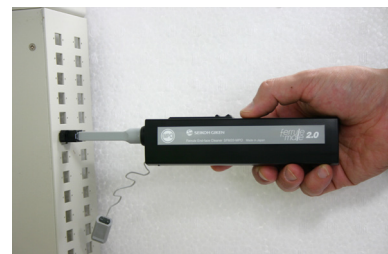
### ■ Applications

1. Inside Plant distribution panels and assemblies.
2. Outdoor pedestal bulkheads for FTTx installations.
3. Server cards, optical switches, routers and OADMs female modules.
4. Cable assembly production environments.
5. Benchtop Testing and Final Inspection pack-out stations.



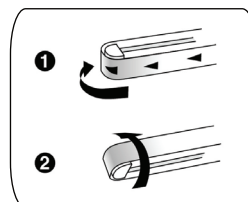
### ■ Key Features

1. Patented 360 degree Rotational Tip provides extra wide cleaning.
2. Easy one-push operation with extendable/retractable contoured nozzle.
3. Highly effective cleaning via non-woven micro fiber.
4. Lint free and zero static.
5. 800+ cleanings per unit = Ultra low cost per connector cleaned.
6. Static dissipative plastic resin body and tape feed is safe for ESD work.
7. FC/SC/ST Cleaner Pen, Universal 2.5mm O.D. Ferrule Application.
8. LC/MU Cleaner Pen, Universal 1.25mm O.D. Ferrule Application.
9. MPO Multi-Fiber Plastic Ferrule Application exceeds industry requirements.
10. Compliant with EU/95/2002/EC Directive (RoHS).






### ■ Patented Cleaning Technology

- ① Slide-Guide™ non-slip micro tape feeder guarantees high reliability
- ② Dual Rotational tip provides superior ferrule endface cleaning



ferrule  
mate™ 2.0

## ■ Specification/ Ordering Information

| Part Number                   | SFM2.0-250  | SFM2.0-125   | SFM2.0-MPO  |
|-------------------------------|---|--|---|
| Image                         |  |  |  |
| Specification                 | L230 x W30 x H40 mm (Including cap)   |  |   |
| Weight                        | 85g   |  |   |
| Cleaning per unit             | 800+  |  | 500+  |
| Applicable Connector/ Adaptor | SC/ FC/ ST/ 2.5mm<br>(PC & Angle PC)  | LC/ MU/ 1.25mm<br>(PC & Angle PC)  | MPO<br>(PC and Angle PC)  |

## ■ Cleaning Criteria/ Results

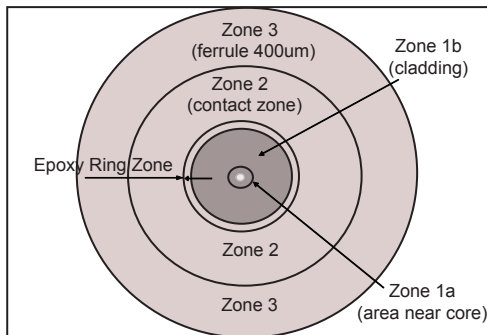
The FerruleMate™ 2.0 optical interconnect cleaner meets or exceeds all current and emerging standards\* for fiber cleanliness in high power laser applications.

\*Telcordia GR-2923-CORE, iNEMI, IEC 61300-3-35, Cisco EDCS 7027180

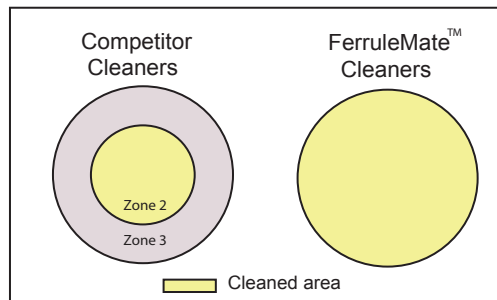
An Ideal Connector will not have any contamination or scratches in the core, cladding or ferrule contact area surrounding the cladding.

- Zone 1a- Contamination is strictly prohibited from Fiber Core Area defined as 0um to 25um.
- Zone 1b- Contamination larger than 3um prohibited from Cladding Area defined as 25um to 120um.
- Zone 2 - Contamination larger than 10um prohibited from Contact Area defined as 130um to 250um.

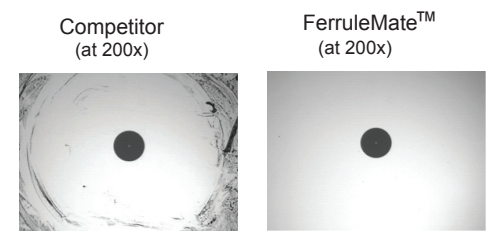
**Ferrule Inspection Standard**



**Contact Area Comparison**



**Actual Cleaning Results**



Cleaning area by FerruleMate™ is 4x larger than that of competitor

## WORLDWIDE SUBSIDIARIES AND SALES OFFICES:

### North America

Atlanta, Georgia  
Tel: +1-770-279-6602  
Fax: +1-770-279-8839  
sales@sg-usa.com

### Europe

Frankfurt, Germany  
Tel: +49-6102-297-701  
Fax: +49-6102-297-750  
info@sg-euro.de

### Asia

Matsudo, Japan  
Tel: +81-47-388-6111  
Fax: +81-47-388-4477  
sales.div@seikoh-giken.co.jp

### China

Hangzhou, PROC  
Tel: +86-571-8777-4098  
Fax: +86-571-8777-4099  
sales@seikoh-giken.net

