

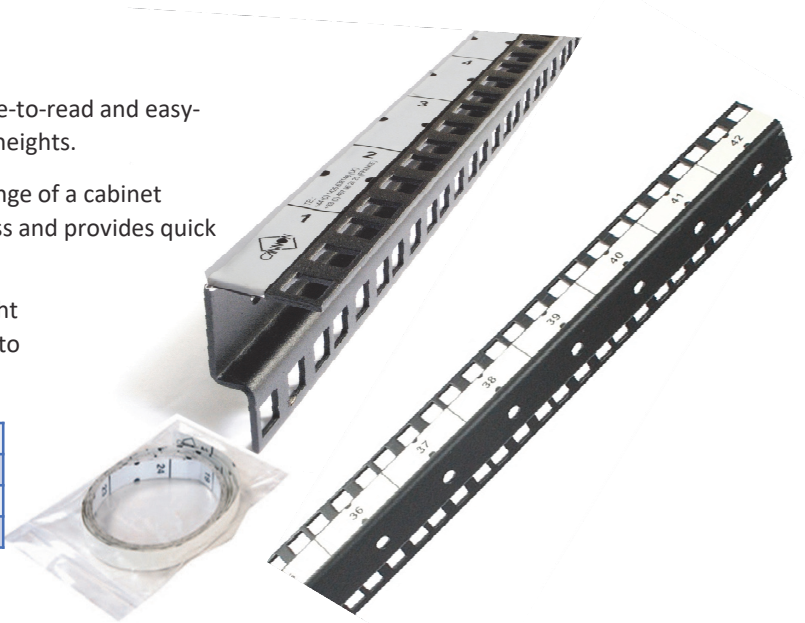
### 'U' HEIGHT IDENTIFICATION LABELS

Cannon 'U' height identification labels offer a simple-to-read and easy-to-fix identification system for all standard cabinet heights.

The self-adhesive strip is designed to fit the side flange of a cabinet mounting post where it is discrete but easy to access and provides quick and easy equipment positioning.

The identification strip offers standard cabinet height breaks, 'U' height position markers and may be cut to suit any height of cabinet up to a maximum of 52U.

DESCRIPTION	PART CODE
U HEIGHT LABEL 1U -52U KIT	LA0050
1U-26U LABEL	LA0082-A
27U-52U LABEL	LA0082-B



### RETRACTABLE STABILISER

This optional stabiliser is easily retro-fittable to the cabinet base and provides a degree of protection against tipping for free standing cabinets, sited directly on the floor.

**Finish:** Standard: Powder painted Black RAL9005 or Grey White RAL9002.

*Additional colours available on request.*

CABINET FOOTPRINT	PART CODE
600mm x 600mm	365B50606000
600mm x 800mm	365B50608000
600mm x 900mm	365B50609000
600mm x 1000mm	365B50609900
600mm x 1200mm	365B50601200
800mm x 600mm	365B50806000
800mm x 800mm	365B50808000
800mm x 1000mm	365B50809900
800mm x 1200mm	365B50801200

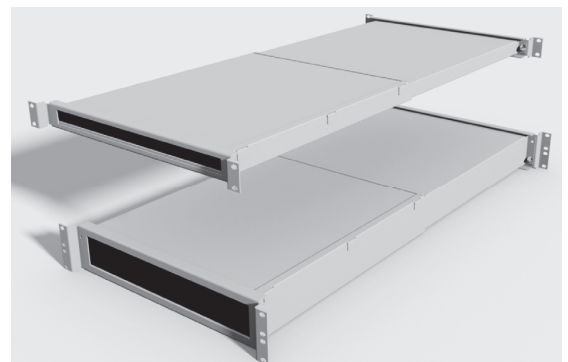


### TELESCOPIC CABLE TROUGH.

Cannon telescopic cable trough fits directly to front and rear 19in ch mounting posts and allow:

- Cable management between the front and rear of installed equipment within the 19" area.
- Seal front air path to provide efficient cooling of equipment
- Telescopic size: 550mm to 1000mm

DESCRIPTION	PART CODE
1U 19" 550 to 1000mm CABLE TROUGH WITH FRONT BRUSH STRIP	925B01609900
2U 19" 550 to 1000mm CABLE TROUGH WITH FRONT BRUSH STRIP	925B02609900



**Materials & Finish:** Powder coated MS & Nylon Brush.  
**Supplied:** Individually with fixings.